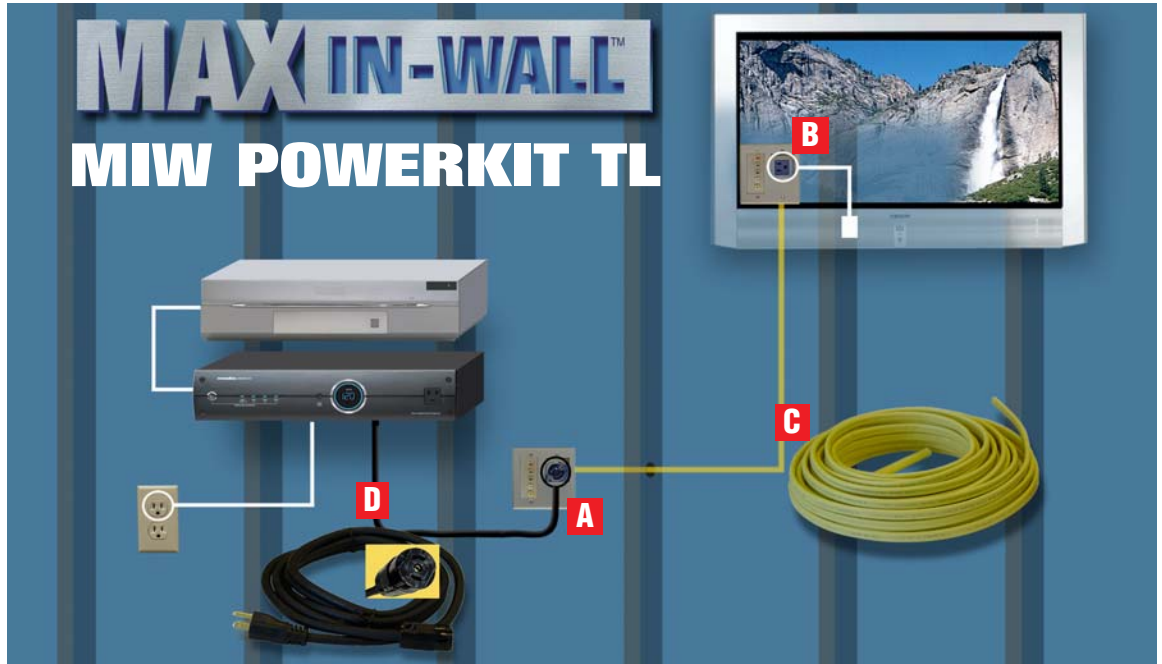


MAX-IN-WALL™

# The Ultimate Power Solution for Remote Display Devices Within a Home Theater System



The enhanced **MAX® IN-WALL™ POWERKIT-TL** is a four component kit designed to provide the ultimate power solution to remote display devices within a home theater system. Taking advantage of the already installed EX Component style power conditioner you can feed safe, pure power from the main equipment rack to any remote display device, amplifier or powered subwoofer.

The **MIW-POWERKIT-TL** offers UL approved, code compliant solutions providing safe, clean AC power and signal with Isolated Ground Reference (IGR) to remote displays in a discreet manner that meets the customer's aesthetic expectations and improves picture and sound quality.

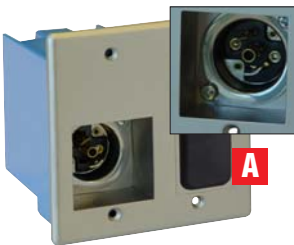
**Model: MIW-POWERKIT-TL**  
**SELL PRICE US \$299.95**

## Step 1 Install the POWER INLET FACEPLATE (PIF)

Install the Power Inlet Faceplate (PIF) behind or near the main equipment rack.

- Recessed AC power inlet (Twistlock Connector)
- Removable panel for signal module (module not included)
- Includes Retrofit style J- box and mounting screws.

(For New Construction Adaption see side 2).



## Step 2 Install the POWER OUTLET FACEPLATE (POF)

The power outlet faceplate (POF) provides additional filtration to eliminate any radiated noise that may have been picked-up along the way.

- Recessed AC power outlet
- Noise filtration
- Removable panel for signal module (module not included)
- Includes Retrofit style J- box & mounting screws

(For New Construction Adaption see side 2).



## Step 3 Install the IN-WALL POWER CABLE

An electrician runs the In-Wall Power Cable between the PIF and the POF. This premium quality NM LISTED cable provides optimum power transfer to the display device.

- 50 ft. length
- 12-2 NM Rated with ground



## Step 4 Connect the AC POWER CORD

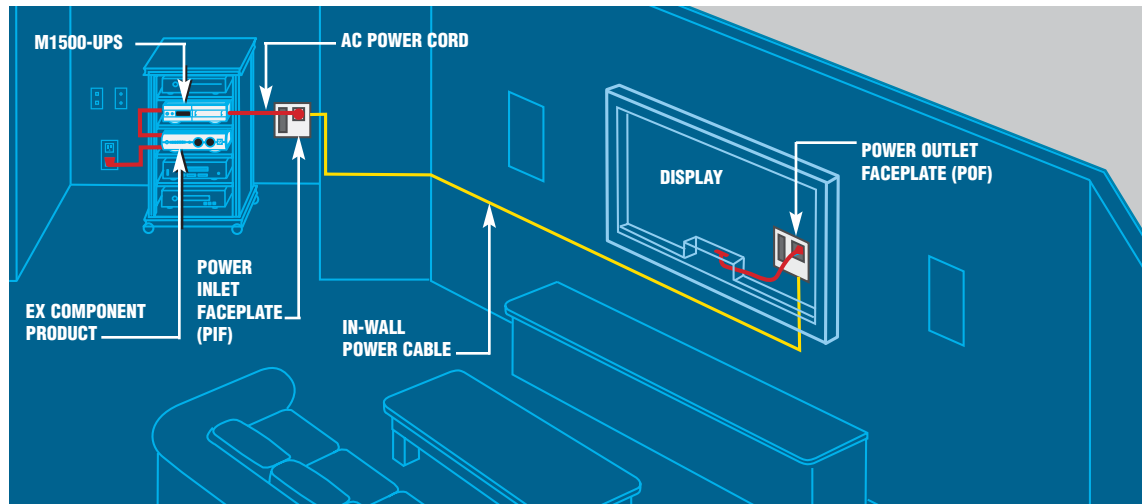
The AC Power Cord safely connects to the special twist lock inlet wall receptacle bringing the power from the power conditioner to the remote flatscreen or projector. The MIW POWER CORD is engineered to provide optimum power transfer and shield-out performance robbing noise.

- Twistlock Connector
- National Electrical Code (NEC) compliant
- 12 ft. length
- Shielded against EMI/RFI noise
- 12 gauge OFC conductors

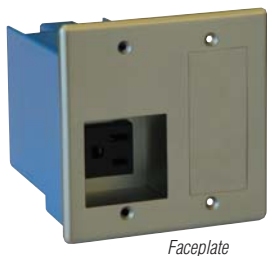


## The Perfect Power Delivery Solution

The Combination of any MAX® EX-Component, MAX® 1500-UPS and MAX® IN-WALL POWERKIT-TL provides the perfect solution for providing, clean, safe power to plasmas, ceiling projectors and LCD's remotely located from the main equipment rack eliminating troublesome power sags and black-outs.



## Adapting the MIW-POWERKIT-TL For New Construction (pre-wire)



Faceplate

RETROFIT-FIT J-BOX for installation in existing wall.

The MIW-POWERKIT-TL comes equipped with a Carlon RETROFIT style J-Box to accommodate the heavy demand for placing the outlet anywhere desired in an already existing wall or paneling.



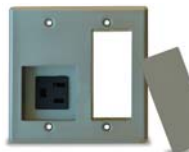
Bracket / Box

However, for NEW CONSTRUCTION use a Carlon new-work electrical box (**Model #B122A-UPC**). A Carlon low voltage add-on bracket (**Model #SC100SC**) may be used with the new-work box to indicate the size and location of the opening needed in the drywall. The low-voltage bracket may be left in place when installing the MIW-POWER.

**Please Note:** The Carlon electrical box **Model #B122A-UPC** and the bracket **Model #SC100SC** are NOT INCLUDED with the MIW-POWER package and must be purchased separately from your nearest electrical equipment supplier.

NEW CONSTRUCTION BOX AND BRACKET for attaching to wall stud before dry-walling. **NOT INCLUDED**

## MIW Signal Line Modules Available (sold separately)



For signal line connections, simply remove the panel and pass the lines through the low voltage enclosure.

**Please Note:** MIW Signal Line Modules not included. Contact Panamax for a dealer nearest you.

4 MIW Signal Line Modules now available.

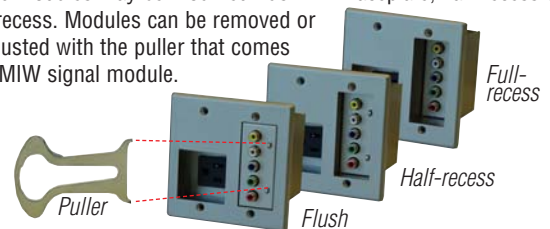
**MIW-M5RCA**

**MIW-VGA**

**MIW-SVIDEO**

**MIW-DATA**

Signal line modules may be mounted flush with faceplate, half-recess or with full recess. Modules can be removed or depth-adjusted with the puller that comes with any MIW signal module.



## SPECIFICATIONS MIW-POWERKIT-TL

<b>POWER INLET FACEPLATE</b> AC Connector.....NEMA ML-2P	<b>IN-WALL POWER CABLE</b> Length.....50 ft. Type.....12-2 NM Rated with ground
<b>POWER OUTLET FACEPLATE</b> AC Connector.....NEMA 5-15R Receptacle Noise Filtration.....Capacitive	<b>AC POWER CORD</b> Length.....12 ft. Connectors.....NEMA 5-15P and ML-2R
<b>WARRANTY</b> Product Warranty.....3 Years	
<b>NOTE:</b> The noise filtration level will depend on the MAX component the MIW-POWERKIT-TL is installed with. See the specifications section in the instructions for the MAX component product in your system.	

Specifications are subject to change without notice due to product up-upgrades and improvements.

## UPC's, QUANTITIES, WEIGHTS & MEASUREMENTS FOR ORDERING & SHIPPING

MODEL: MIW-POWERKIT-TL SINGLE (KIT) UNIT CARTON			
Dimensions	Weight	Qty.	UPS
8" x 8.125" x 9.75"	9.5 lbs.	1	0 50616 00736 8

MODEL: MIW-POWERKIT-TL MASTER CARTON			
Dimensions	Weight	Qty.	UPS
10.75" x 17.25" x 17"	38 lbs.	4	5 00 50616 00736 3